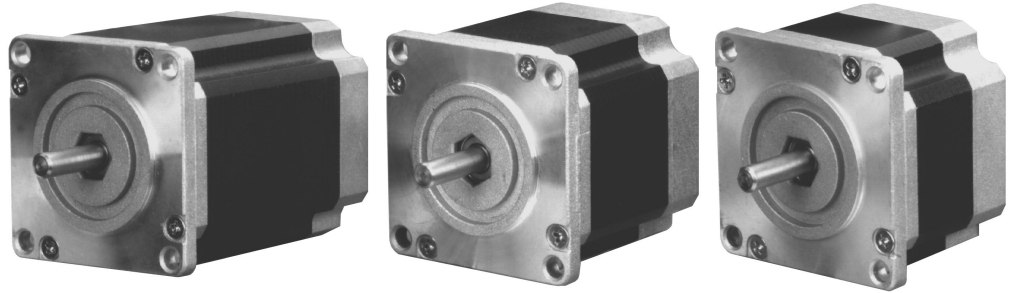


SIZE  
**23**  
2.22"  
SQ

# Rotary Hybrid Stepping Motor 1.8°

## High Torque



EADmotors Size 23 hybrid DC stepping motors are precision bi-directional devices with position accuracy of  $\pm 3\%$  non-cumulative.

Motors are totally enclosed with permanently lubricated ball bearings.

Standard motors have 4 or 6 leads. Motors with 5 or 8 leads can be furnished to meet existing applications.

EADmotors specializes in meeting the individual requirements of each application and offers engineering assistance for your design requirements.

### Electrical Ratings

Model Number	Unipolar Connection						Bipolar Connection						Rotor Inertia (oz-in-sec.)	Weight (ounces)
	Number of Leads	Phase Voltage (VDC)	Phase Current (amps)	Phase Resistance (ohms)	Phase Inductance (mH)	Holding Torque (oz-in)	Phase Voltage (VDC)	Phase Current (amps)	Phase Resistance (ohms)	Phase Inductance (mH)	Holding Torque (oz-in)			
LH2318-05	6	11.90	0.50	23.50	41.4	72	16.8	0.35	47.00	165.6	90	0.002	17	
LH2318-1	6	6.00	1.00	6.00	10.8	72	8.49	0.71	12.00	43.2	90			
LH2318-2	6	3.00	2.00	1.57	2.6	72	4.24	1.41	3.14	10.4	90			
LH2318-3	6	1.80	3.00	0.61	1.0	72	2.55	2.12	1.22	4.0	90			
LH2318-M100	4						5.80	1.00	5.78	20.3	90			
LH2318-M200	4						3.00	2.00	1.50	5.2	90			
LH2318-M300	4						1.80	3.00	0.60	2.0	90			
LH2322-05	6	15.40	0.50	30.90	67.3	120	21.8	0.35	61.80	269.2	150	0.0035	24	
LH2322-1	6	7.60	1.00	7.59	17.7	120	10.8	0.71	15.18	70.8	150			
LH2322-2	6	3.80	2.00	1.91	4.2	120	5.37	1.41	3.82	16.8	150			
LH2322-3	6	2.30	3.00	0.76	1.6	120	3.25	2.12	1.52	6.4	150			
LH2322-M100	4						7.90	1.00	7.92	35.00	150			
LH2322-M200	4						3.80	2.00	1.90	8.60	150			
LH2322-M300	4						2.40	3.00	0.80	3.50	150			
LH2331-05	6	17.90	0.50	35.70	93.8	190	25.3	0.35	71.40	375.2	240	0.0061	37	
LH2331-1	6	9.20	1.00	9.23	22.5	190	13.0	0.71	18.46	90.0	240			
LH2331-2	6	4.50	2.00	2.24	5.2	190	6.36	1.41	4.48	20.8	240			
LH2331-3	6	2.80	3.00	0.92	2.1	190	3.96	2.12	1.84	8.4	240			
LH2331-M100	4						9.10	1.00	9.13	45.4	240			
LH2331-M200	4						4.70	2.00	2.33	11.5	240			
LH2331-M300	4						3.00	3.00	1.00	4.8	240			

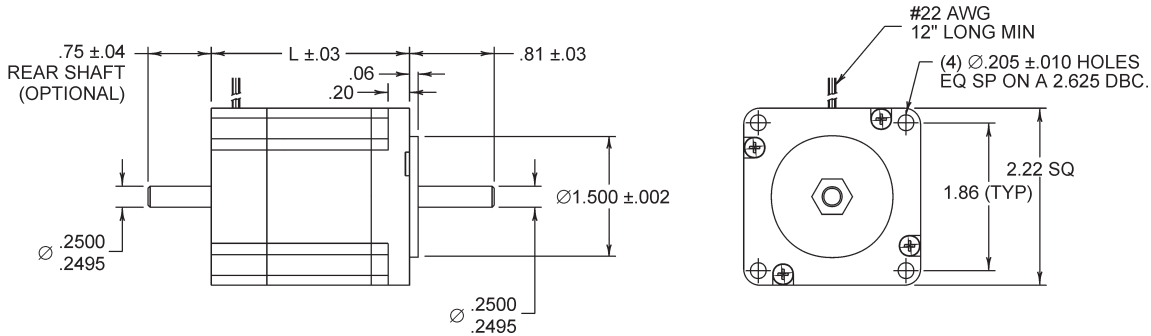
Solutions in motion



# Rotary Hybrid Stepping Motor 1.8°

High Torque

SIZE  
**23**  
2.22"  
SQ

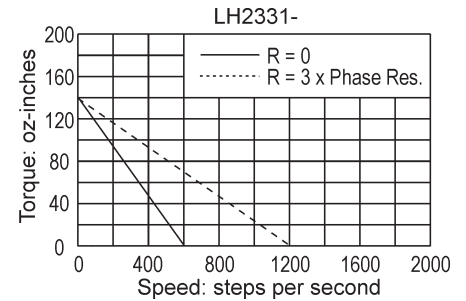
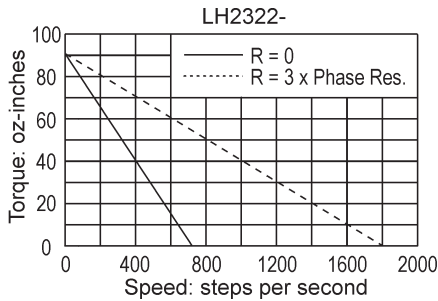
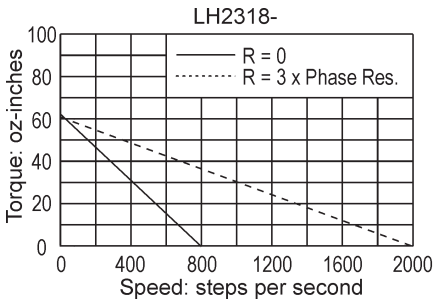


Size 23	
Model Series	Dimension "L" (inches)
LH2318	1.75
LH2322	2.21
LH2331	3.09

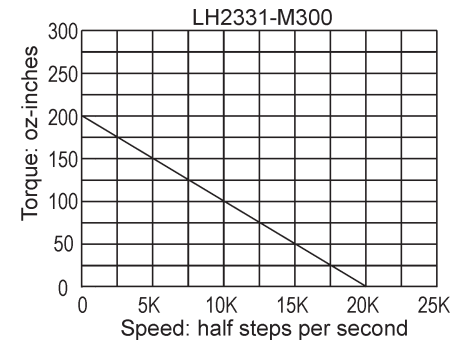
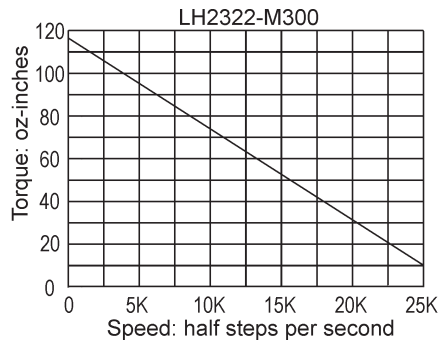
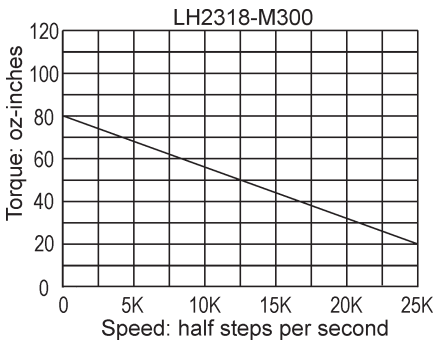
See page 38 for Connection Diagrams.  
For the rear shaft option, use the suffix "R" (for example, LH2318-2R).

## Pullout Torque Speed Curves

Typical Unipolar Performance (6 Lead Motor): Constant Voltage Drive (L/R), 2 Phase On



Typical Bipolar Performance: 80 VDC Power Supply, 3 Amps/Phase



Solutions in motion

